

BOFA's DentalPRO range of fume extraction systems effectively removes potentially harmful zirconia dust and particulate generated during the CAD/CAM manufacture and hand finishing of crown and bridge frameworks for dental implants.



A Donaldson Company

A WORLD LEADER IN FUME
EXTRACTION TECHNOLOGY

DENTAL DUST AND FUME EXTRACTION

- Application
- Aluminium Oxide Milling
- CAD/CAM Manufacture
- Crown and Bridge Frameworks
- Dental Milling
- Dust Extraction
- Hand Working Processes
- Monomer Mixing
- Spindle Drivers
- Zirconia
- Zirconium Milling



DentalPRO 250

BOFA's DentalPRO 250 under bench dust extraction system effectively removes particulates generated during the hand finishing of dental implants. It is ideally suited to manual bench top applications, where technicians need to be able to work without restriction, but in the knowledge that dust particles are being effectively removed to maintain a safe working environment.

A brushless motor, designed for longer continuous running before requiring servicing, a large bag filter with a 6.4 litre capacity and a high efficiency HEPA filter makes this unit perfect for a single user system, combining maximum operator protection with a small footprint. It is an easy to operate unit with low running costs.

Approvals CE

Dimensions

520 x 290 x 265mm
20.47 x 11.42 x 10.53"

Airflow/Pressure

180m³/hr / 30mbar
106cfm / 30mbar

Technology



\$ 1,340



DentalPRO 400

This under bench multi user system effectively removes particulates generated during the hand finishing of dental implants and is ideally suited to manual bench top applications. Technicians can work without restriction, but in the knowledge that dust particles are being effectively removed to maintain a safe working environment.

A brushless high vacuum blower, for longer continuous running before requiring servicing, a bag filter with a large 6.4 litre capacity and a high efficiency HEPA filter makes this unit perfect for dental hand finishing work for multiple users and low running costs.

Approvals CE

Dimensions

595 x 290 x 275mm
23.43 x 11.42 x 10.83"

Airflow/Pressure

400m³/hr / 96mbar
235cfm / 96mbar

Technology



\$ 3,200



DentalPRO Universal

BOFA's DentalPRO Universal stand alone dust extraction system effectively removes smaller particulates generated during the CAD/CAM milling of dental implants. The unit's high efficiency two-stage filtration process allows technicians to work safe in the knowledge that dust particles are being effectively removed to maintain a clean working environment.

The unit's high vacuum pump is brushless and designed for continuous running for longer periods of time before requiring servicing. The bag filter has a large 18 litre capacity and the HEPA filter is highly efficient.

Approvals CE

Dimensions

590 x 460 x 535mm
23.23 x 18.11 x 21.06"

Airflow/Pressure

285m³/hr / 96mbar
167cfm / 96mbar

Technology



\$ 3,500



DentalPRO Base

BOFA's DentalPRO Base is a ride on dust extraction system, which effectively removes smaller particulates generated during the CAD/CAM milling of dental implants. The unit is designed from the milling machine to be securely placed on top of the extraction system, which itself doubles up as a space saving stand.

The unit's high efficiency two-stage filtration process allows technicians to work safe in the knowledge that dust particles are being effectively removed, to maintain a clean working environment. The bag filter has a large 18 litre capacity and the HEPA filter has an efficiency of 99.997% down to 0.3 microns.

The high vacuum blower is brushless and designed for longer continuous running before requiring servicing. An added optional extra is an onboard compressor providing the miller with clean oil-free air for all compressed air requirements.

Approvals CE

Dimensions

610 x 670 x 765mm
24.02 x 26.38 x 30.12"

Airflow/Pressure

285m³/hr / 96mbar
167cfm / 96mbar

Technology



\$ 4,500



DentalPRO Xtract 100

BOFA's DentalPRO Xtract 100 dust and fume extraction cabinet is designed for the effective removal of potentially harmful dust and fumes generated during dental hand finishing or monomer mixing applications.

This unit is ideally suited to manual bench top applications and provides technicians with a well lit enclosure, giving them the flexibility to work without restriction in the knowledge that dust particles and fume are being effectively removed to maintain a safe working environment.

This system combines maximum technician protection in a small footprint, with scalable and flexible options.

Approvals CE



Dimensions **290 x 400 x 345mm**
11.42 x 15.75 x 13.58"

Opening Dimensions **265 x 400mm**
10.4 x 15.6"

Technology



\$ 1,760

DentalPRO Xtract 200

BOFA's DentalPRO Xtract 200 dust and fume extraction cabinet is designed for the effective removal of potentially harmful dust and fumes generated during dental hand finishing or monomer mixing applications.

This unit is ideally suited to manual bench top applications and provides technicians with a well lit enclosure, giving them the flexibility to work without restriction in the knowledge that dust particles and fumes are being effectively removed to maintain a safe working environment.

This system combines maximum technician protection in a small footprint, with scalable and flexible options.

Approvals CE



Dimensions **355 x 540 x 400mm**
13.98 x 21.26 x 15.75"

Opening Dimensions **315 x 540mm**
12.4 x 21.3"

Technology



\$ 2,200

DentalPRO Xtract 300

Dust and fume extraction cabinet for multiple hand finishing dental laboratory applications. BOFA's DentalPRO Xtract 300 dust and fume extraction dental cabinet is designed for the effective removal of potentially harmful dust and fumes generated during dental hand finishing or monomer mixing applications.

This unit is ideally suited to manual bench top applications and provides technicians with a well lit enclosure, giving them the flexibility to work without restriction in the knowledge that dust particles and fumes are being effectively removed to maintain a safe working environment.

This system combines maximum technician protection in one compact unit, with scalable and flexible options with different accessories, lighting, and internal storage.

Approvals CE



Dimensions **380 x 730 x 520mm**
14.96 x 28.74 x 20.47"

Opening Dimensions **380 x 695mm**
14.96 x 27.36"

Technology



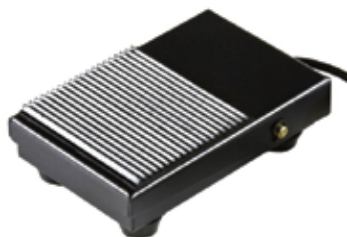
\$ 4,300



DentalPRO Accessories

Optional Foot Switch

The Bofa dentalPRO Footswitch works with Bofa Dental extraction systems.



System	Part Number	Price
DentalPRO 250	A1070A1070184	\$461
DentalPRO 400	A1070184	

Replacement Pre-Filter Bag

Bag filters are occasionally used in laser fume elimination for their containment properties. These bags have a variety of shapes including multi pocket styles to increase surface area and reduce pressure drops.



Order Code	Part Number	Price
DentalPRO 250	A1030135	\$59
DentalPRO 400	A1030241	\$40
DentalPRO Universal	A1030170	\$51
DentalPRO Base	A1030170	

Replacement HEPA Filter

The high-efficiency particle HEPA filters used in BOFA's portable filtration systems enables you to remove 99.997% of particles at 0.3 microns in size. This ensures that clean air is maintained in the workplace, for a cleaner, healthier, working environment.



Order Code	Part Number	Price
DentalPRO 250	A1030287	\$76
DentalPRO 400	A1030287	
DentalPRO Universal	A1030161	\$131
DentalPRO Base	A1030161	



	DentalPRO Mono	DentalPRO 150	DentalPRO 250	DentalPRO 400	DentalPRO Universal	DentalPRO Base	DentalPRO 1000 IQ	DentalPRO 1000 IQ M	DentalPRO Xtract 100	DentalPRO Xtract 200	DentalPRO Xtract 300
STANDARD FEATURES	Compact design	✓	✓	✓	✓				✓	✓	✓
	Auto sensing voltage (90-257V) for global use			✓	✓	✓					
	Digital speed control			✓	✓	✓					
	Automatic flow control system						✓	✓			
	Brushless motor	✓		✓	✓	✓	✓	✓			
	Filter blocked indicator	✓	✓	✓	✓	✓	✓	✓			
	Advanced carbon filter technology	✓					✓				
	HEPA filter technology		✓	✓	✓	✓	✓	✓			
	Reverse flow air technology						✓	✓			
	Patented technology						✓	✓			
	Replaceable protector screen								✓	✓	✓
	Internal LED strip light								✓	✓	✓
	Side entry grommets								✓	✓	✓
	Removable collection tray								✓	✓	✓
	Intelligent (iQ) Operating System						✓	✓			
	CE	✓	✓	✓	✓	✓	✓	✓	✓	✓	✓
	SureCHECK quality standard	✓	✓	✓	✓	✓	✓	✓	✓	✓	✓
ProTECT	✓	✓	✓	✓	✓	✓	✓	✓	✓	✓	
OPTIONAL FEATURES	VOC gas sensor (Volatile Organic Compound)					✓					
	Remote stop/start interface			✓	✓	✓	✓				
	Filter change/system fail signal			✓	✓		✓	✓			
	Foot switch		✓	✓							
	90° spigot lid		✓								
	Onboard compressor					✓	✓	✓			



RFA Reverse flow air technology



AFC Automatic flow control technology



SFT SMART filter technology



MVS Multi voltage sensing unit



PATENTED Patented technology



SureCHECK SureCHECK quality standard



PROTECT ProTECT service plan